

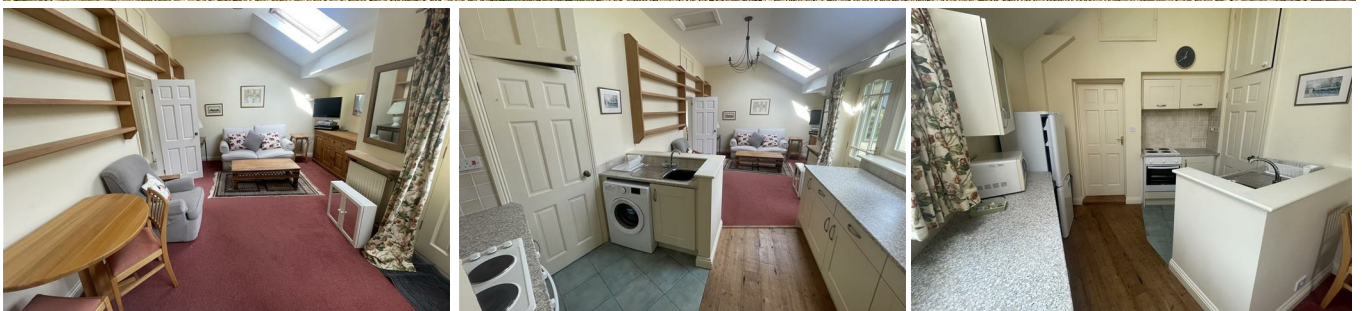


WHITES

RESIDENTIAL ESTATE AGENTS
PROPERTY LETTING & MANAGING AGENTS
VALUERS & PROPERTY CONSULTANTS
CHARTERED SURVEYORS

01722 336422

www.hwwhite.co.uk WEB



Fordingbridge

£850 PCM

Orchard House Annex Sillens Lane, Martin, Fordingbridge, Hampshire, SP6 3LB





A superior FURNISHED annex in a sought after rural location available on a short term basis. The annex comprises: Front door that leads into an open plan sitting room kitchen. The kitchen comes well equipped with washing machine, electric oven and hob and fridge freezer. A large well sized double bedroom with with built in wardrobes. New refurbished bathroom with shower over bath, inset wash hand basin with cupboard under, WC,. Off road parking, garden, oil heating. Council tax, electricity and water all included.

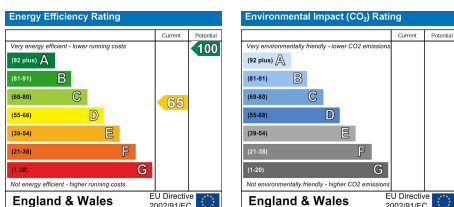
Viewing

By confirmed appointment only with the vendor's agent. Telephone 01722 336422.

Agents Note

Every effort has been made to prepare these particulars as carefully as possible. However, intending purchasers should be aware that their accuracy is not guaranteed, nor do they form part of any contract. Please note that the quoted room sizes are approximate and we advise you to verify the dimensions carefully, especially when ordering carpets, fittings, or any built in furniture. Where heating and electrical equipment is included, please be aware that we have not tested the appliances.

18877319/ Ludo Glanville



WHITES

01722 336422

47 Castle Street, Salisbury SP1 3SP 01722 320600 FAX
residential-sales@hwwhite.co.uk E-MAIL www.hwwhite.co.uk WEB